

Issue
15
October
2017



The Great Life News

MONTHLY NEWSLETTER

COMPREHENSIVE PLAN

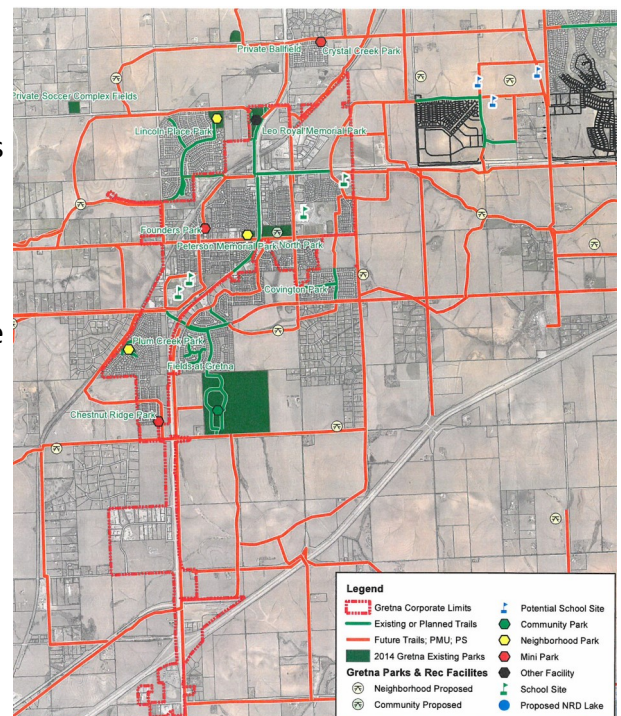
The City of Gretna developed a new Comprehensive Plan for the City in 2009. Since then, there have been at least three updates to the plan. With a growing community comes evaluation of the current plan to meet the changing needs of our citizens and the development community. The following is an explanation of a Comprehensive Plan, the process, and the elements of the Plan.

The comprehensive planning process is used to determine community goals and aspirations in terms of community development. The outcome of comprehensive planning is the Plan which dictates public policy in terms of transportation, utilities, land use, recreation and housing for the community. Comprehensive plans typically encompass a geographical area, a broad range of topics and cover a long-term time horizon.

Comprehensive planning typically follows a planning process that includes multiple steps. By following a process, planners are able to determine a wide range of issues that affect the community. Planning processes, to be relevant, must address issues of concern to residents, workers, property owners and business people, but also emerging issues that will be important in the future. Community leaders, community organizations, and citizens need to be involved to develop a sound comprehensive plan.

The planning process, once identifying the issues, needs to state goals, collect data, prepare the plan, evaluate alternatives and then adopt the plan. The process usually takes several months.

Continued on next page.



Message from the Sheriff's Department

Greetings,

First and foremost I must thank the citizens of Gretna for their ongoing support of the Sarpy County Sheriff's Office. The strong support that we have received along with those valuable partnerships that have been built within the community are key components in our continued efforts to provide the residents with high quality law enforcement services.

As for the law enforcement related issues taking place within the community, it appears that most of the calls to our office are traffic related. Of those calls many of them are the result of vehicles speeding and/or running stop signs within residential neighborhoods. Unfortunately, over the years, I have learned that many of those individuals responsible for such acts actually live within the neighborhoods where the traffic issues are taking place. Please be mindful of the posted speed limits and stop signs as you are travelling within residential areas. Your fellow citizens and local sheriff's office will appreciate it.

Keep in mind that winter is quickly approaching. Please familiarize yourself with the city's snow emergency parking restrictions. Such restrictions are in place to ensure that the roadways are cleared promptly and for the safe passage of emergency vehicles.

Finally, the men and women of the Sarpy County Sheriff's Office are looking forward to working together with the citizens and city leaders to ensure that Gretna continues to be a role model community.

Thank you,
Lt. Dennis Svoboda

COMPREHENSIVE PLAN—Continued

A comprehensive plan is not a permanent document. It can and should be changed and updated over time. For fast growing communities like Gretna, the plan should be addressed every five to seven years, in order to keep the plan current.

A comprehensive plan is not a legally binding document but is the basis for the Zoning Ordinances and Subdivision Regulations, which are adopted as part of the laws of the community.

Facebook

The City of Gretna now has a presence on Facebook. You can friend us at "City of Gretna, Nebraska". You will receive notices on job openings, the City Calendar, and recent activity posts that we also post on our web site.



204 North McKenna Ave.
Gretna, Nebraska 68028
402-332-3336 ph
402-332-5631 fax
www.gretnane.org

Sheriff's Department
402-593-4111 ph
Emergencies 911



Find us on
Facebook